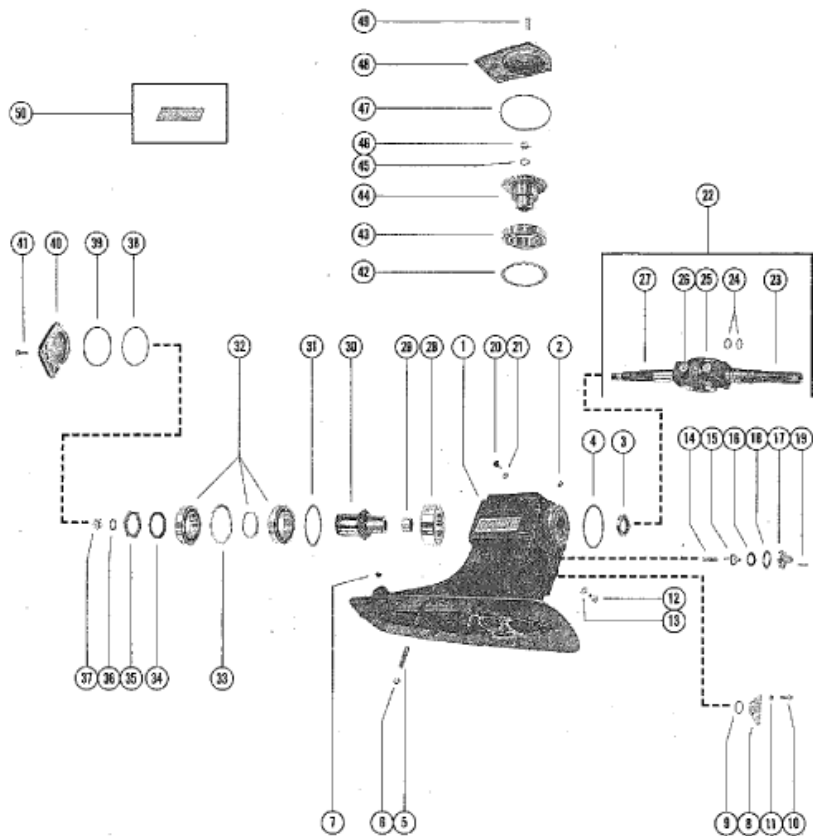


# HYDRAULIC SHIFT



Parts List						
Ref	Class	Part	Description	Qty	Comment	Footnote
1	1571	3766A	DRIVE SHAFT HOUSING ASSEMBLY	1		
2	10	21934	SCREW, SET-DRIVE SHAFT HC	1		
3	26	38105	OIL SEAL, DRIVE SHAFT HOUSING	1		
4	25	32068	"O" RING, DRIVE SHAFT HOUSING	1		
5	16	54674	STUD, DRIVE SHAFT HOUSING	6		
6	11	34933	NUT, DRIVE SHAFT HOUSING STUD	6		
7	19	47579	PLUG, TRIM TAP HOLE-DRIVE SHAFT HOUSING	1		
8		57745	COVER, PLUG-DRIVE SHAFT HOUSING	1		
9	25	47632	"O" RING, PLUG COVER	1		
10	10	22486	SCREW, PLUG COVER TO DRIVE SHAFT HOUSING	3		
11	13	22773	LOCKWASHER, PLUG COVER SCREW	3		
12	10	28634	SCREW, VENT-DRIVE SHAFT HOUSING	1		
13	12	20260	WASHER, SEALING-VENT SCREW	1		
14	24	48442	SPRING, TENSION-OIL RELEASE VALVE	1		
15	20	48219	CHACK VALVE, OIL RELEASE VALVE	1		
16	25	48452	QUAD RING, OIL RELEASE CHECK VALVE	1		
17		54168	GUIDE, CHECK VALVE	1		
18	278	54020	GASKET, CHECK VALVE GUIDE	1		
19	10	2523	SCREW, CHECK VALVE GUIDE TO DRIVE SHAFT HOUSING	3		
20	23	54349	BUSHING, PLUG-DRIVE SHAFT HOUSING	2		
21	12	54351	WASHER, SEALING-PLUG BUSHING	2		
22		54397A	UNIVERSAL JOINT ASSEMBLY, FORWARD	1		
23		57749A	YOKE ASSEMBLY, UNIVERSAL JOINT	1		
24	25	25439	"O" RING, UNIVERSAL JOINT	2		
25		39383	SOCKET, CENTER-UNIVERSAL JOINT	1		
26		36312	CROSS AND BEARING ASSEMBLY	2		
27		54397	YOKE, UNIVERSAL JOINT (GEAR)	1		
28		57742A	ADAPTOR ASSEMBLY, ROLLER BEARING	1		
29	31	55831	ROLLER BEARING, ADAPTOR ASSEMBLY	1		
30	43	54401A	GEAR ASSEMBLY, PINION-UNIVERSAL JOINT	1		
31	15	54008A	SHIM ASSEMBLY, REAR PINION GEAR	AR		
32	31	54038A	TAPERED ROLLER BEARING ASSEMBLY	1		
33	23	53999	SPACER, TAPERED ROLLER BEARING ASSEMBLY	1		
34	12	54049	WASHER, SPLINTED-REAR PINION GEAR	1		
35	11	54046	NUT, REAR PINION GEAR	1		
36	12	54006	WASHER, UNIVERSAL JOINT	1		
37	11	55819	NUT, UNIVERSAL JOINT	1		
38	15	54008A	SHIM ASSEMBLY, REAR COVER	AR		
39	25	39695	"O" RING, REAR COVER	1		
40		57765	COVER, REAR	1		
41	10	21985	SCREW, REAR COVER TO DRIVE SHAFT HOUSING	4		